



Artificial Intelligence in Education

Meenakshi Uberoi

Microsoft in Education

Through this training, Microsoft intends to,

- Accomplish the mission of empowering students and Educators to do more
- Integrate Teaching and Learning experiences with **Technology**

To know more, please visit <https://www.microsoft.com/education>

AGENDA

- AI in Education
- AI powered Office tools
- AI for fostering 21st century skills





AI In Education!

Empower Students To Their Best Work

- Personalise learning
- Navigate your own learning
- Foster future-ready skills
- Enables anytime anywhere learning
- Brings collaboration and connectedness in learning
- Empowers students to think creatively



AI

Enable Teachers To Engage Every Learner

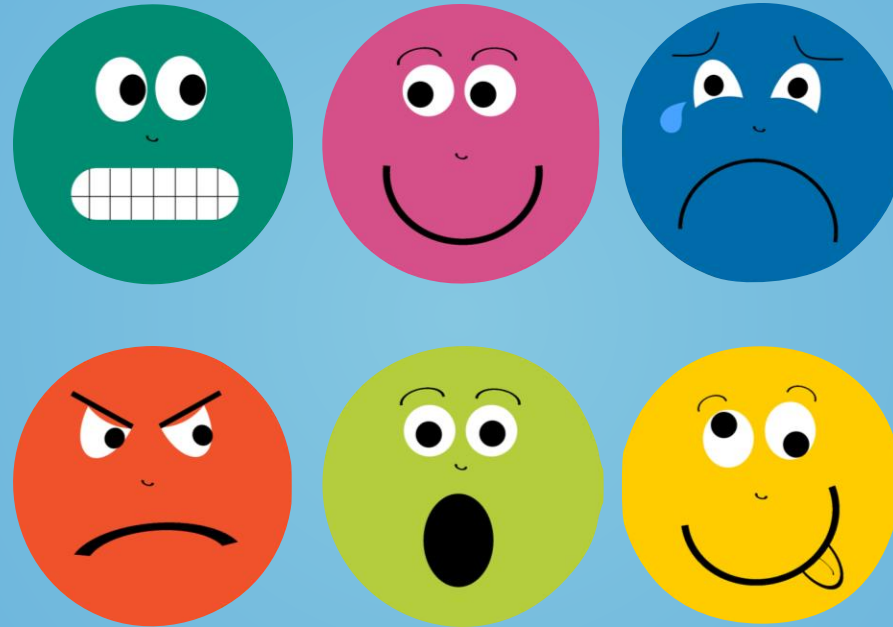
- Enables teachers to Personalise learning
- Monitor and navigate learning progress
- Foster future-ready skills
- Enables anytime anywhere teaching-learning
- Brings collaboration in planning and teaching
- Increase student engagement using immersive learning experiences



Ensure Equity and Inclusion In Schools

- Enables schools to make students workforce-ready
- Monitor and track school and student progress
- Intelligent environments provide insights to make substantive decisions
- Increases productivity and effectiveness for all
- Makes learning accessible and inclusive

How Are You Today?



bit.ly/HRUTAP

AI powered Learning Tools- Immersive Reader

The background of the slide is a dark, textured surface composed of numerous overlapping, semi-transparent geometric shapes. These shapes include triangles, squares, and circles, some of which are filled with fine, parallel lines or a grid pattern. The color palette is primarily dark green and blue, with accents of a muted gold or brown. The overall effect is a complex, layered, and modern aesthetic.

Learning Tools
Immersive Reader
creates a reading
experience that adds
accessibility and
comprehension for
learners of all ages and
abilities.





The study of Earth's landforms is called
physical geography. Landforms can be
mountains and valleys. They can also be
glaciers or rivers. Landforms are
sometimes called physical features.



Syllables



Parts of Speech



nouns n.



verbs v.



adjectives adj.



adverbs adv.



Show labels



AutoSave On Amazon Rainfor... - Last Modified: Just now Search

File Home Insert Design Layout References Mailings Review View Help

Clipboard Font Paragraph Styles Editing

Find Replace Select Dictate

The Amazon Rainforest

The Amazon Rainforest is an expansive forest located in the Amazon Basin. The forest covers an area as large as the 48 contiguous United States. (Field Museum Estimate 16,000 Tree Species in the Amazon) Contained within it is a dizzying array of distinct tree species – aproxxemity 16,000 different species in total – have much fewer than 1,000 living trees. Because of this, its dense animal biodiversity, its higher taxonomic uniqueness, and the rarity of the habitat, the Amazon is considered to be a distinct ecoregion. (Amazon Rainforest, Amazon plants, Amazon river Animals)



Deforestation

428 words

Type here to search

Display Settings Focus

140%



Math Notes

Wednesday, December 19, 2018 11:06 AM

A handwritten equation in green ink: $y = \frac{1}{4} \left(\sin \left(\frac{1}{2} x \right) \right)$. A small circular handle with a cross is positioned over the 'i' in 'sin'.

Math

$$y = \frac{1}{4} \left(\sin \left(\frac{1}{2} x \right) \right)$$

Solve for x

Solve for y

Graph in 2D



8/21/19, 2:03 PM Office Lens

How Plants Grow What do plants need to grow? They need wa·ter and light, of course, but they al·so need nu·tri·ents, fresh air, a com·ture, space to spread their roots, and

Spanish
light
luz

& Nu·tri·ents Plants draw wa·ter and oil. That's why we wa·ter the soil, not the

Type here to search

AI and its applications are making a significant mark on the lives of learners

The learning shift is happening now

The screenshot displays a web application interface for a pronunciation tool. The browser's address bar shows a search bar with the placeholder text "Search, launch, and command". The application's title is "Geography of the Earth". On the left, a sidebar contains icons for Activity, Chat, Teams, Calendar, Files, Assignments, and Store. The main content area features a video of a young girl, Krystal McKinney, wearing headphones. To the right of the video, her name is displayed, along with statistics: Attempts: 2, Level: N, Words: 207, and a link to Insights. Below these are two large boxes showing "81 Correct Words per Minute" and "83% Accuracy Rate". To the right of these boxes is a summary of errors: 5 Mispronunciations, 2 Omissions, 1 Self-corrections, 1 Insertions, and 0 Repetitions. The main text area contains three paragraphs of text about physical geography. The first paragraph is "The study of Earth's landforms is called physical geography. Landforms can be mountains and valleys. They can also be glaciers, lakes, or rivers. Landforms are sometimes called physical features. It is important for students to know about the physical geography of Earth." The second paragraph is "The seasons, the atmosphere and all the natural processes of Earth affect where people are able to live. One of a combination of factors that people use to decide where they want to live." The third paragraph is "The physical features of a region influence where people live. Within a nation, mountain ranges become barriers for settlement areas. In the U.S., major mountain ranges are the Rocky Mountains, and the Appalachian Mountains." A context menu is open over the word "physical" in the third paragraph, showing options: Omission, Insertion, Mispronunciation, Repetition, Self-correction, Mark as correct, and Jump to word. At the bottom, a fourth paragraph begins: "Fresh water sources also influence where people settle. People need water".

Geography of the Earth

Krystal McKinney

Attempts: 2 Level: N Words: 207 Insights

81 Correct Words per Minute

83% Accuracy Rate

5 Mispronunciations 1 Insertions
2 Omissions 0 Repetitions
1 Self-corrections

The study of Earth's **landforms** is called physical geography. Landforms can be mountains and valleys. They can also be **glaciers**, lakes, or rivers. Landforms are sometimes called physical features. It is important for students to know about the physical geography of Earth.

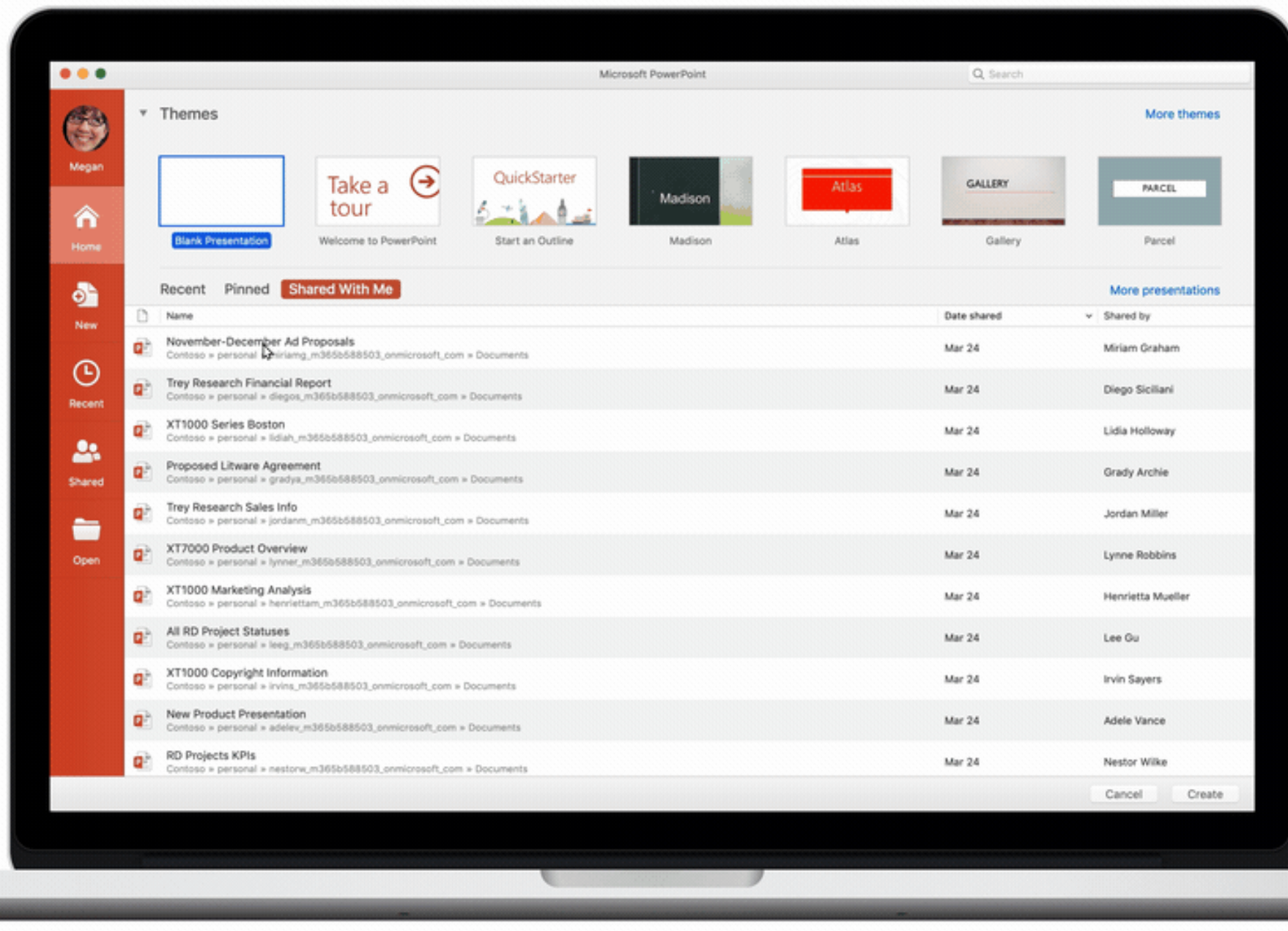
The seasons, the **atmosphere** and all **the** natural processes of Earth affect where people are able to live. One of a **combination** of factors that people use to decide where they want to live.

The **physical** features of a region influence where people live. Within a nation, mountain ranges become barriers for settlement areas. In the U.S., major mountain ranges are the Rocky Mountains, and the Appalachian Mountains.

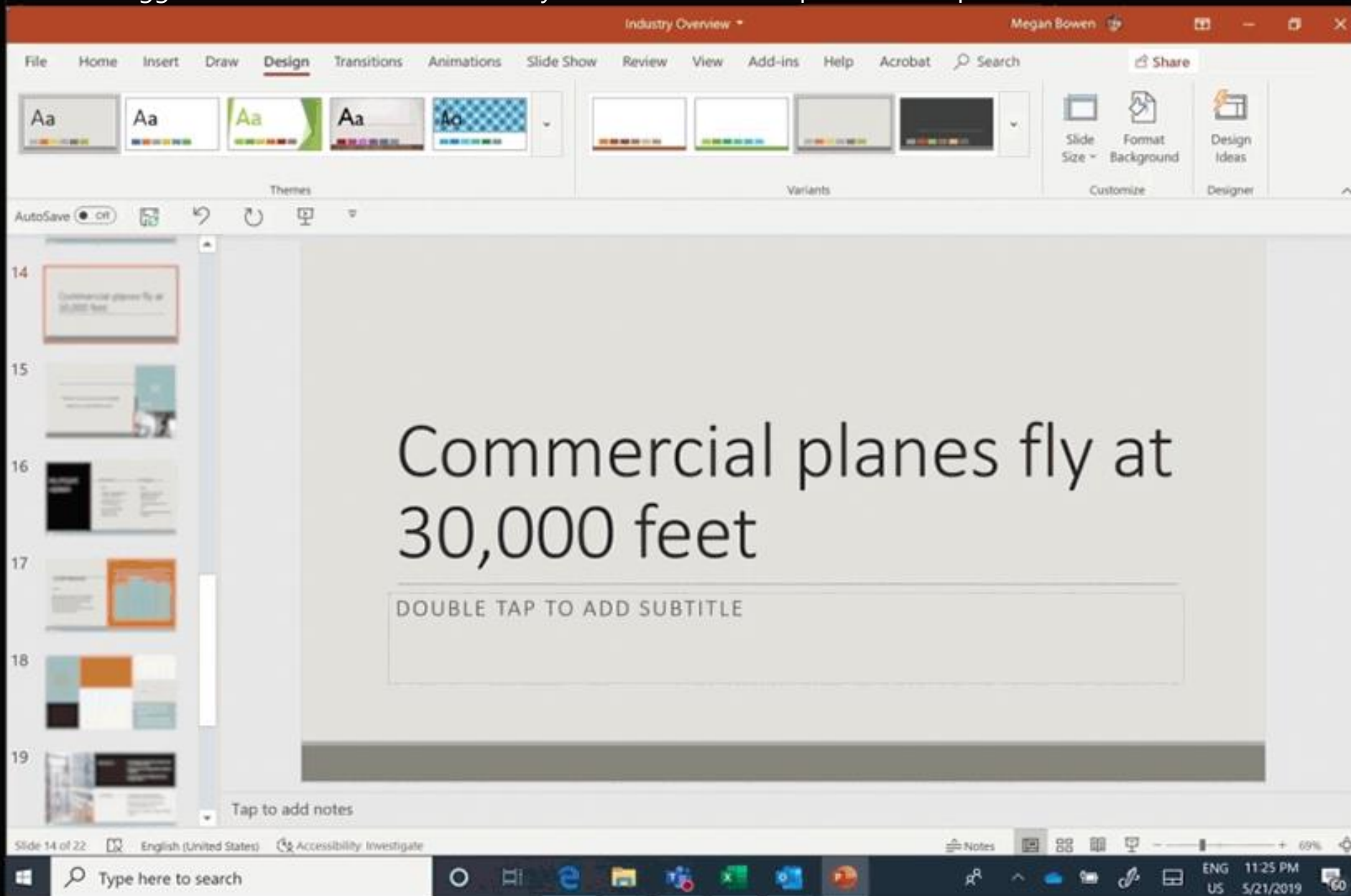
Fresh water sources also influence where people settle. People need water

AI built in PowerPoint





PowerPoint's Designer Perspective, which is fuelled by Microsoft Research's Perspective Engine, will automatically suggest text that makes it easier for your audience to comprehend complicated numerical values.



Your Rehearsal Report (Preview)

[Feedback](#)[Rehearse Again](#)

i Rehearse for more than one minute for Coach to better understand your speech and give recommendations.

Summary

Good job rehearsing! Keep up the hard work.

0:36

total time spent

1

slides rehearsed

Originality

✓ You avoided reading slide text aloud. That's good for keeping the audience engaged with your message.

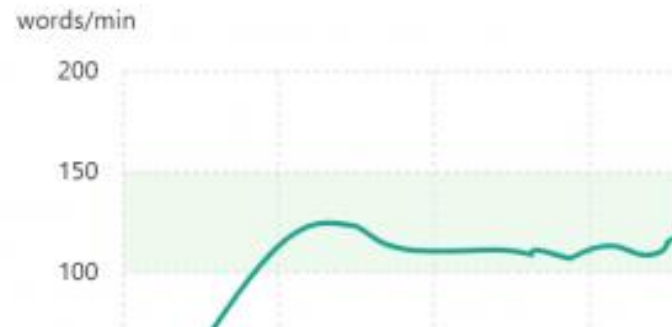
[Learn More](#)

Pace



Your pace is just right! Keep it up!

Your average pace over time



Sensitive Phrases

✓ No sensitive phrases found. Great job using inclusive speech.

[Learn More](#)

Fillers

✓ Fantastic! You didn't say too many filler words in your speech!

[Learn More](#)

1

Event Planning Proposal

2

We Create Extra Ordinary Experiences.

3

4

5

6

We Create Extra Ordinary Experiences.

Our products, services, communications, and people all shape the perception of our brand, through every interaction and touch point. Together, we are defining what it means to be VanArsdel.

VanArsdel

Office

PowerPoint

File Home Insert

Play from Beginning

1 Event Planning Proposal

2 We Create Extra Ordinary Experiences.

3

4

5

6

Sensitive Phrases

✓ No sensitive phrases found. Great job using inclusive speech.

[Learn more](#)

Repetitive Language

NEW

Try using synonyms to avoid repetition. Below are the repeated words from your rehearsal:

awesome

beautiful

I think

Similar words to consider
wonderful, amazing, fantastic

[Learn more](#)

[Learn more](#)

Pronunciation

BETA

* Based on General American English.

We heard a few words from your speech that may need more practice.

extraordinary

rhetoric

expertise

extraordinary

ex-traor-di-nar-y



Practice

[Learn more](#)

[Learn more](#)

Body Language

Suggestions for presentation:



Eye contact
Keep your

Facing a



Distance
Keep a co
your came



Clear view
Keep the v

[Learn more](#)

File Home Insert Design Transitions Animations Slide Show Review View Help Open in Desktop App Tell me what you want to do

Play from Beginning Play from Current Slide Always Use Subtitles Rehearse with Coach

- Spoken Language >
- Subtitle Language
- Bottom (Overlaid)
- Top (Overlaid)
- Below Slide
- Above Slide

Early Solar System Explorations

6th Grade Science



VanArsdel



Corine Peterson

Regional Manager, VanArsdel Sales

“Present Powerfully.”

Corrine earned her bachelor's degree in supply chain economics, magna cum laude, from University of Fabrikam. She is the author of “Economy of Scale” a national best seller. Corrine was awarded VanArsdel's Annual Sales Leadership award in 2018. She devotes much of her free time helping youth develop presentation skills and a passion for career success.



Speaker

Corine Peterson





AI built in Word

Litware-Contoso Sales Proposal

Executive summary

The current consumer electronics market is experiencing unprecedented change—and with that changes comes great opportunity. Together, Litware and Contoso are ideally poised to take a market leadership position and deliver quality, consistency, and innovation to their customers.

Increasingly, people live life with their devices in hand. They are always on and always connected, so they require more from these devices—more power, more speed, more seamless integration. The industry challenge remains clear: Understand your customers, anticipate their future requirements, and deliver above their expectations.

That's why a Litware-Contoso partnership makes sense. No one in the consumer electronics market has a better understanding than Contoso of its long history of exciting innovation, turbulent disruption, and remarkable growth. And no one in the market consistently navigates through these changes and empowers its partners like Contoso.

providing
descriptions for
images
recognizable by
Computer Vision

AutoSave On Amazon Rainforest.docx Aimee Owens

File Home Insert Draw Design Layout References Mailings Review View Tell me what you want to do

Cut Copy Paste Format Painter Clipboard

Calibri (Body) 11 A A Aa Font

B I U abc X X Paragraph


AaBbCcDd AaBbCcDc AaBbCcDc AaBbCcDc AaB Styles

1 Normal 1 No Spac... Heading 1 Heading 2 Title Subtitle Subtle Em... Emphasis Intense E... Editing

Find Replace Select

The Amazon Rainforest

The Amazon Rainforest is an expansive forest located in the Amazon Basin. The forest covers an area as large as the 48 contiguous United States. (Field Museum Scientists Estimate 16,000 Tree Species in the Amazon) Contained within it is a dizzying array of distinct tree species – approximately 16,000 different species in total – many of which have much fewer than 1,000 living trees. Because of this, its dense animal biodiversity, its higher taxonomic uniqueness, and the rarity of the habitat, the Amazon is also considered to be a distinct ecoregion (Amazon Rainforest, Amazon Plants, Amazon River Animals).



Deforestation

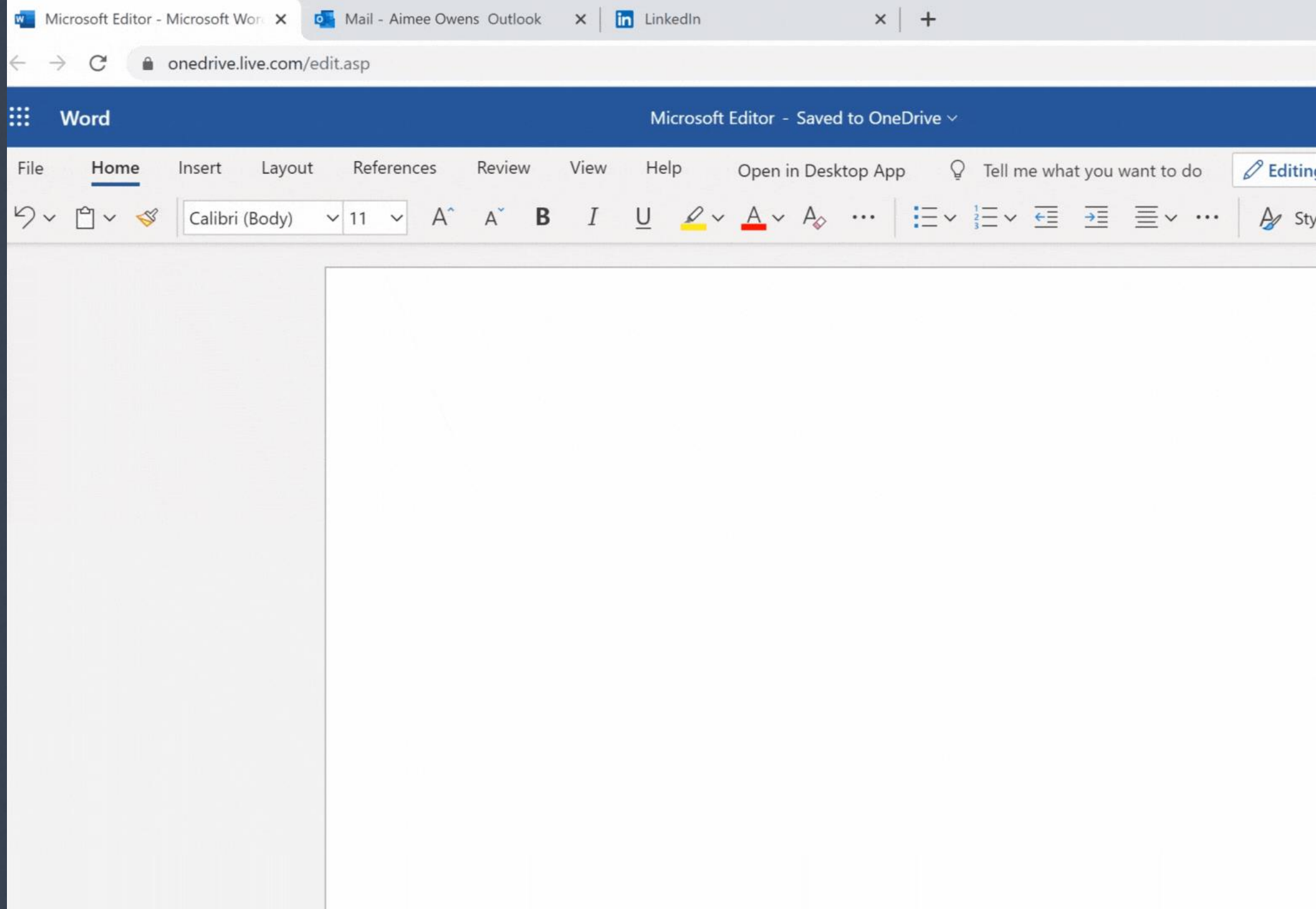
Unfortunately, though deforestation is now widely discussed, the systematic deforestation of the rainforest has increased since 1996. (Margulis) Deforestation is often driven by a desire for cattle ranching, which has proven to be an enticing business for many in the area, and includes many entrepreneurs and intermediaries who benefit, often at the cost of more broad-based social improvement. (Margulis) Governments and large paper and lumber companies profit from rapid deforestation.

Page 1 of 1 205 words

Type here to search

10:17 AM 5/10/2018

Editor's
suggestions in
Word,¹ Outlook,
and on your
favourite sites



**Get help with
the basics of
spelling and
grammar**

We were traveling across
the globe last year

**Check for
level of
formality**

I hope they get their act together
for the next show.

Keep it concise

We don't have an alternative choice
in this situation.

We want to quickly and efficiently finish this task.

AI built in Excel

The background is a dark, textured surface featuring a complex pattern of overlapping, semi-transparent geometric shapes. These shapes include various shades of green, blue, and orange, creating a sense of depth and movement. The pattern consists of many thin, parallel lines that form a series of nested, elongated triangles and other geometric forms, giving it a crystalline or architectural appearance. The overall effect is a modern, high-tech aesthetic.

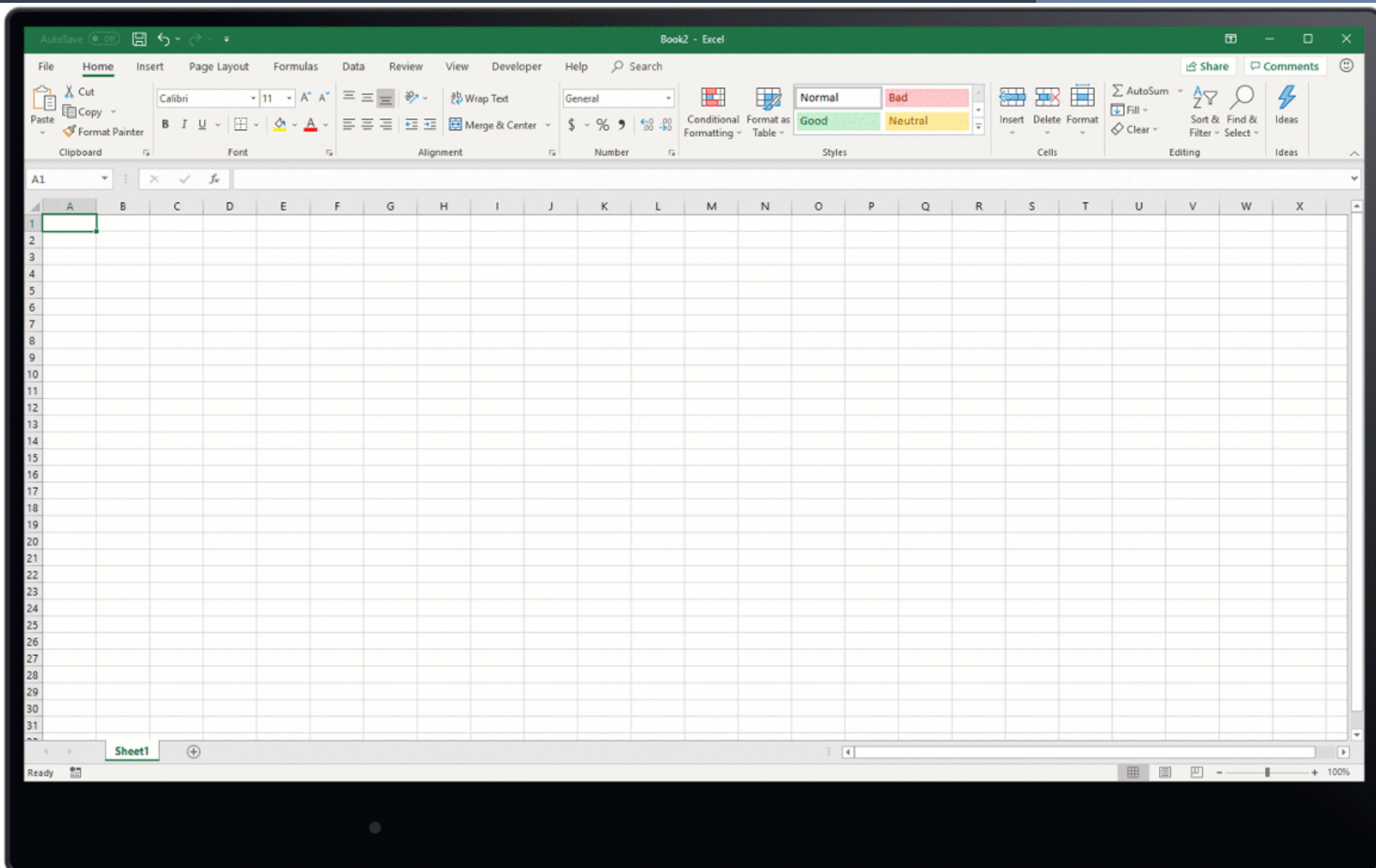
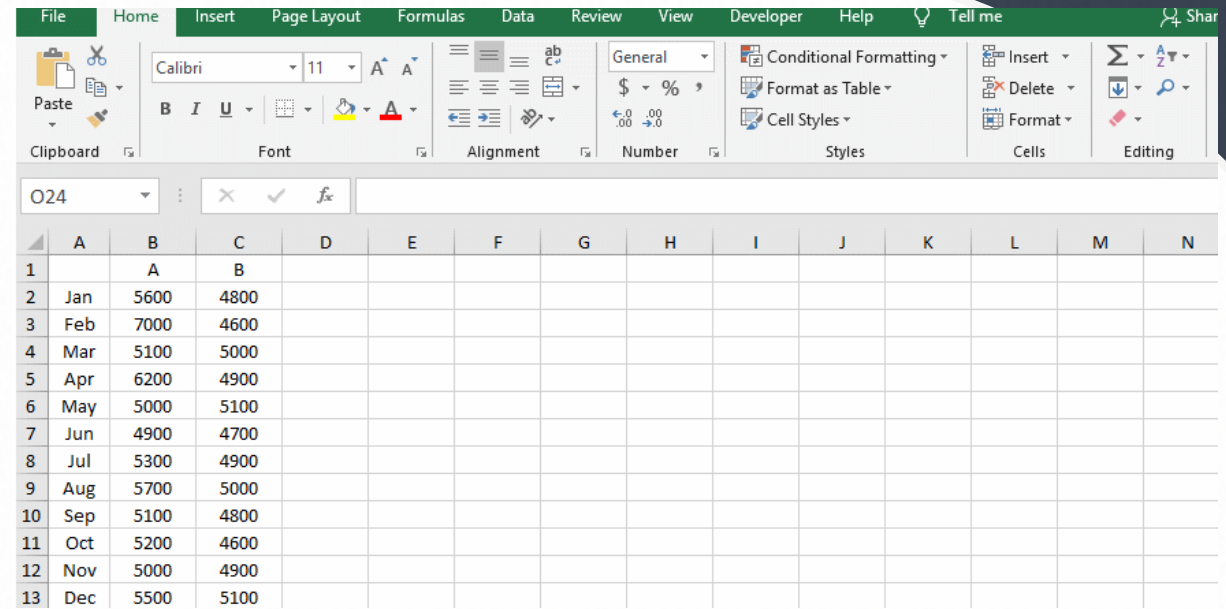




EXHIBIT 3. CMC's Selected Consolidated Financial Data (in millions, except share data)

	1996	1997	1998	1999	2000
Revenue	\$4,476	\$4,467	\$5,094	\$6,171	\$6,851
Operating income	559	754	854	1,381	1,554
Net income	422	527	624	944	1,122
Cash income (or net change in cash)	\$4.24	\$5.07	\$6.17	\$10.01	\$14.31
Non-recurring income (or loss)	\$12,024	\$1,114	\$8,146	\$1,841	\$4.31
Depreciation and amortization	1,019	1,047	1,087	1,241	1,341
Earnings before income taxes	11,091	11,347	12,333	13,322	14,744
Income tax expense	11,178	11,321	11,709	12,378	13,622
Earnings after income taxes	11,091	11,347	12,333	13,322	14,744

Handling large data



	A	B	C	D	E	F	G	H	I	J	K	L	M	N
1		A	B											
2	Jan	5600	4800											
3	Feb	7000	4600											
4	Mar	5100	5000											
5	Apr	6200	4900											
6	May	5000	5100											
7	Jun	4900	4700											
8	Jul	5300	4900											
9	Aug	5700	5000											
10	Sep	5100	4800											
11	Oct	5200	4600											
12	Nov	5000	4900											
13	Dec	5500	5100											

	A	B	C	D	E	F	
	Product	Price	Cost Price	Operating Expenses	Tax	Profit	
1	shirt	120	85	5	10		
2	shoes	200	155	5	15		
3	jeans	85	55	5	5		
4	pants	110	65	5	5		
5	Total						
6							
7							
8							
9							
10							

Excel now supports natural language queries, allowing you to ask a question of your data and get quick answers without having to write a formula

The screenshot shows the Microsoft Excel application running in a web browser. The browser address bar displays the URL: https://contoso.sharepoint.com/personal/megan_bowen_contoso_com/. The Excel ribbon is visible with tabs for File, Home, Insert, Data, Review, View, Help, and Tell me what you want to do. The Home tab is active, showing options for Font, Alignment, Number, Tables, Cells, Editing, Ideas, and Sensitivity. The main workspace displays a table with the following data:

Year	Category	Product	Sales	Rating
2017	Components	Chains	\$ 20,000	75%
2015	Clothing	Socks	\$ 3,700	22%
2017	Clothing	Bib-Shorts	\$ 4,000	22%
2015	Clothing	Shorts	\$ 13,300	56%
2017	Clothing	Tights	\$ 36,000	100%
2015	Components	Handlebars	\$ 2,300	35%
2016	Clothing	Socks	\$ 2,300	28%
2016	Components	Brakes	\$ 3,400	36%
2016	Bikes	Mountain Bikes	\$ 6,300	40%
2017	Components	Brakes	\$ 5,400	38%
2016	Accessories	Helmets	\$ 17,000	90%
2016	Accessories	Lights	\$ 21,600	90%
2016	Accessories	Locks	\$ 29,800	90%
2016	Components	Bottom Brackets	\$ 1,000	23%
2015	Clothing	Jerseys	\$ 6,700	5%
2017	Components	Bottom Brackets	\$ 600	27%
2015	Bikes	Road Bikes	\$ 3,500	50%
2017	Clothing	Jerseys	\$ 7,500	40%
2017	Accessories	Tires and Tubes	\$ 63,700	90%
2017	Bikes	Cargo Bike	\$ 9,300	60%
2017	Bikes	Mountain Bikes	\$ 8,500	46%
2017	Accessories	Bike Racks	\$ 33,700	92%
2017	Clothing	Caps	\$ 600	15%
2015	Bikes	Mountain Bikes	\$ 3,100	35%
2017	Accessories	Pumps	\$ 30,700	95%
2016	Accessories	Pumps	\$ 16,400	80%
2016	Accessories	Bike Racks	\$ 22,100	90%
2017	Accessories	Helmets	\$ 34,000	95%

The bottom of the screen shows the Windows taskbar with the search bar and various application icons.

AI can help foster 21st century skills where students want to navigate their own learning and teachers are thriving to become more effective facilitators of learning



Office Lens

Take content from the analog to the digital world

Immersive Reader available for Office Lens on iOS



Learning Tools

Comprehension, fluency and decoding aids

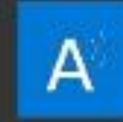
Word, OneNote, Outlook Web Access, and Edge



Dictate

Use voice to get your best thoughts into your documents

Word, Excel, PowerPoint, OneNote, Outlook



Read Aloud

Read your content with simultaneous word highlighting

Word, OneNote, Outlook Web Access, and EDGE



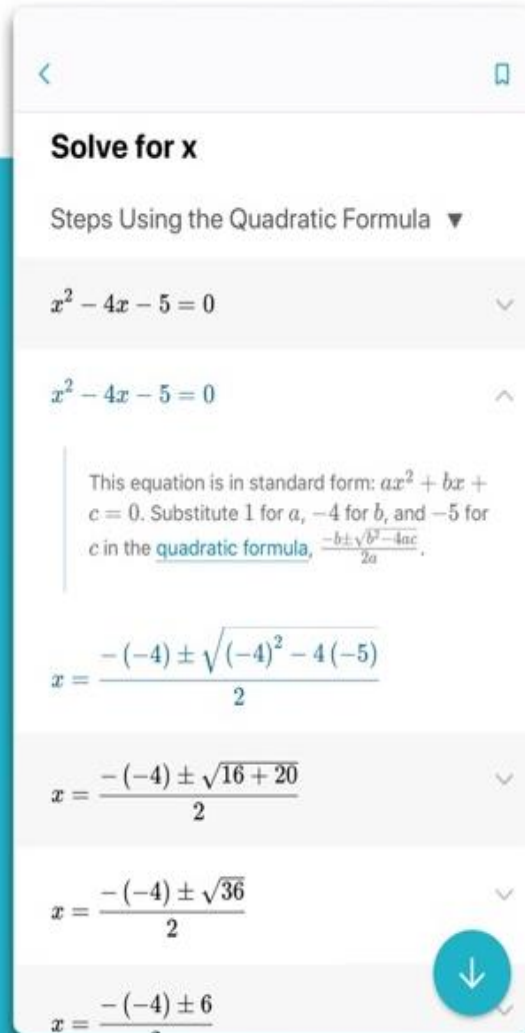
Editor

Write easy-to-read documents, with more confidence

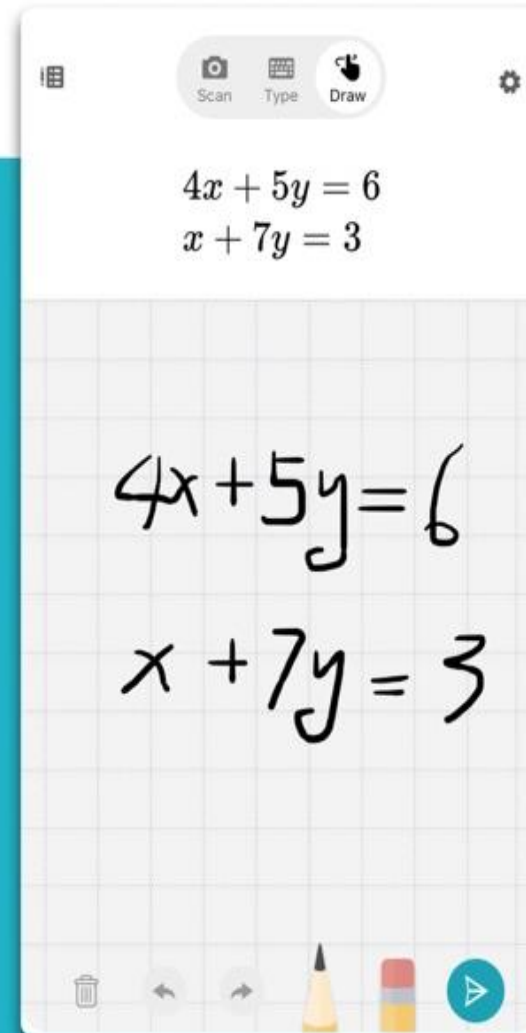
Word, Excel, PowerPoint, OneNote, Outlook

AI in Math using Math Solver app

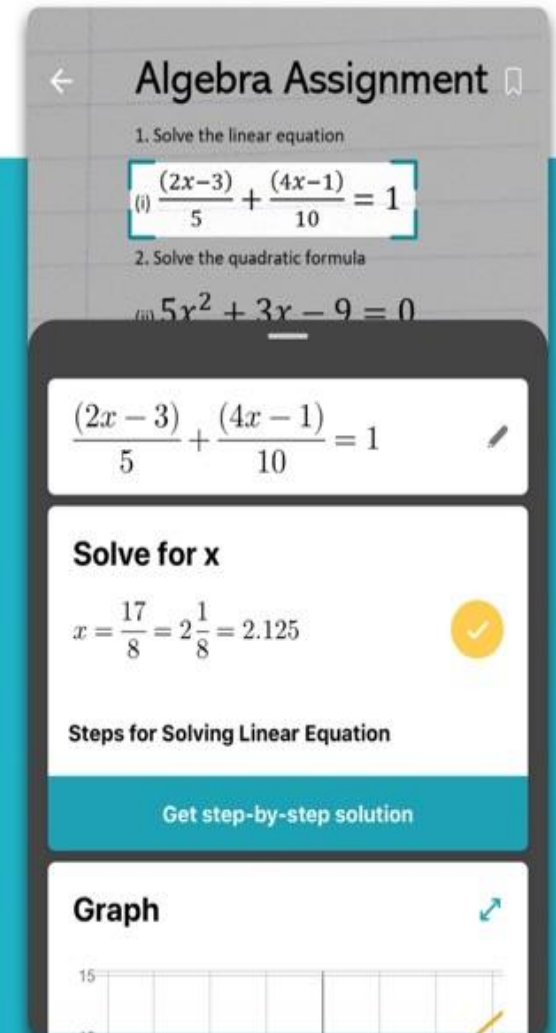
Get step-by-step
explanations



Write naturally
as on paper



Scan and solve
math problems



AI in Math using Math Solver app

$$\frac{3}{n^2} \cdot \frac{n-4}{1} \cdot \frac{2}{3n^2}$$

$$-6 \log_3(x-3) = -24$$

$$x^2 - 4x - 5 = 0$$

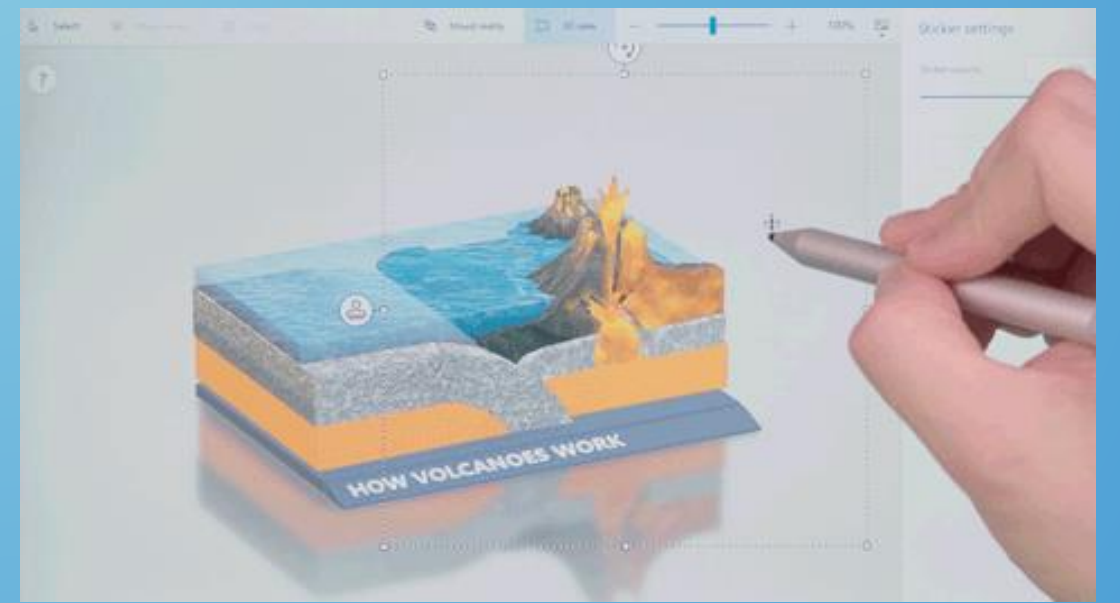
$$\begin{cases} 8x + 2y = 46 \\ 7x + 3y = 47 \end{cases}$$

$$\begin{bmatrix} 2 & 3 \\ 5 & 4 \end{bmatrix} \begin{bmatrix} 2 & 0 & 3 \\ -1 & 1 & 5 \end{bmatrix}$$

x	1	3	$\frac{4}{7}$
y	5	15	20

$$\cos x \quad \cos x$$

AI based learning platforms



Check your knowledge



1. Editor in Word is much more robust than Spell Check. It can suggest and catch errors such as_____.

- clarity and conciseness
- inclusive language
- formal language
- all of the above



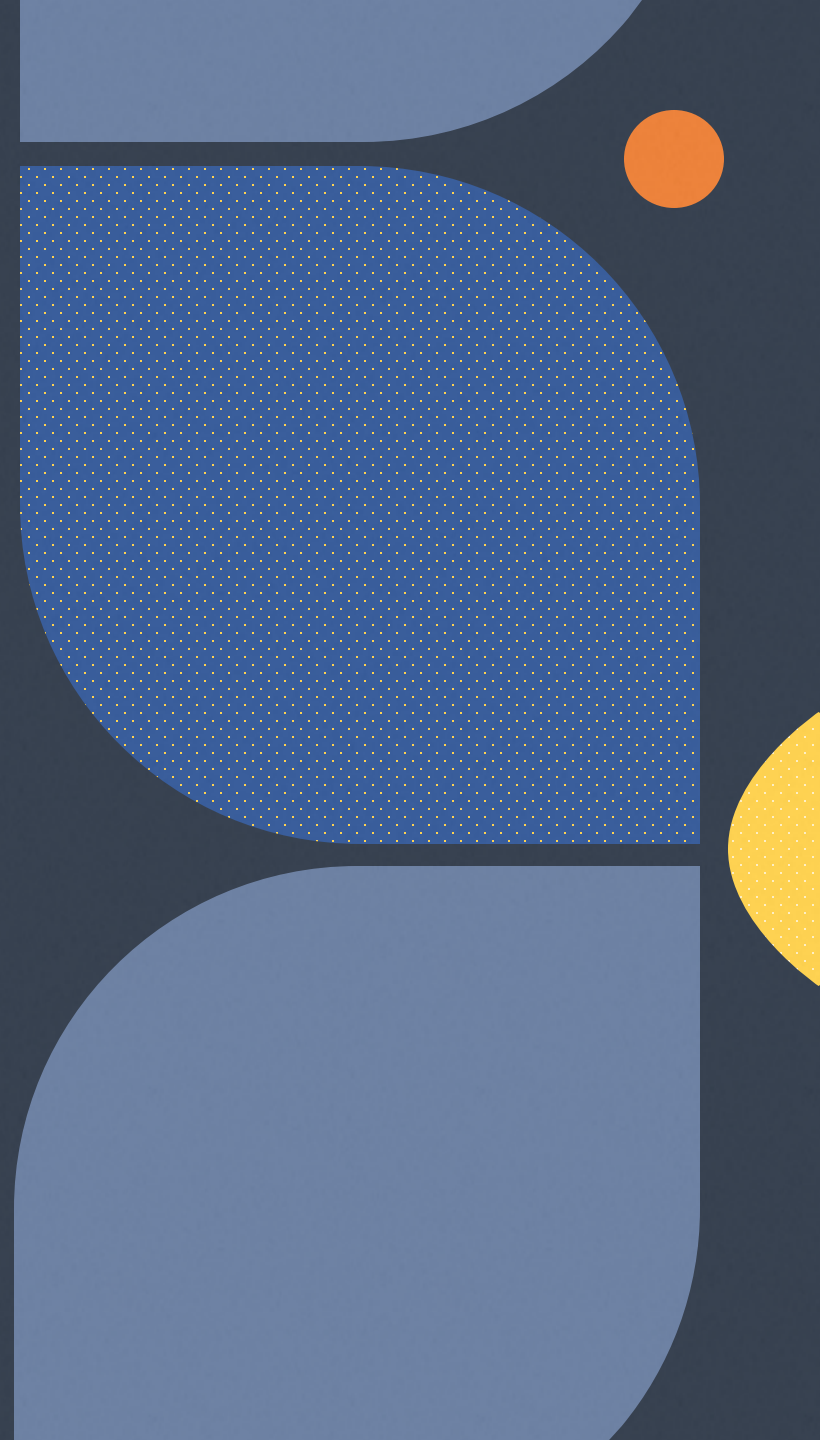
2. Alt-text is what a screen reader reads when it comes across a document, image, or graph so that the user knows what is there.

- False
- True



3. Teachers can turn printed material into editable digital material with _____.

- a clipboard
- the Designer feature in PowerPoint
- the Accessibility Checker
- Office Lens



4.The Translator feature can translate real-time audio so that two people who are speaking different languages can get a translation immediately during their conversation in_____.

- **Audio**
- **PowerPoint**
- **Teams**
- **Office Lens**



5. Students with learning differences can benefit from using:

- Learning Tools, Immersive Reader, Math Assistant, Office Lens
- only Office Lens
- only Immersive Reader



AI based Bots



Talk to Miko:

- Any Information based question (for any age)
- Complex movements of Miko
- Multiplication Tables
- Time / Date / Year / Alarm / Reminder
- Songs / Dances / Riddles / Jokes
- Math Calculations
- Spellings
- Definitions
- Phonetics

00:22:06



Leave



Open in app



KWL - All About Energy!

K - What I know:

Solar energy comes from the sun



Renewable Energy comes from wind and other natural forces

Fossil fuels come from the ground

Fossil fuels are Non-renewable

W - What I Wonder:

Where exactly do fossil fuels come from?

How are these energy sources different?

How can we help the environment?



How do we get energy from the sun?

L - What I Learned:

Coal and oil come from the remains of fossilized plants and animals.



Fossil fuels will eventually run out!

Waterfalls can also be used to make energy.





Chapter 1: Quadratic Equations

Chapter 1

1) Solve for x: the quantity 2 plus 3 is 5

$$2 + 3 = 5$$

2) Solve for x: the product of 5 and 3 is 15

$$5 \times 3 = 15$$

3) Solve for x: 4 times 3 is 12

$$4 \times 3 = 12$$

4) Solve for x: 60 divided by 3 is 20

$$60 \div 3 = 20$$

5) Solve for x: 2 times 3 plus 4 is 10

$$2 \times 3 + 4 = 10$$

6) Solve for x: 30 plus 8 minus 9 is 29

$$30 + 8 - 9 = 29$$

7) Solve for x: 2 times (3 plus 4) minus 5 is 11

$$2(3 + 4) - 5 = 11$$

8) Solve for x: 2 times (4 minus 2) minus 8 is -12

$$2(4 - 2) - 8 = -12$$

9) Solve for x: 2 times (10 minus 5) minus 6 is 14

$$2(10 - 5) - 6 = 14$$

10) Solve for x: 2 times (6 plus 7) minus 12 is 18

$$2(6 + 7) - 12 = 18$$

11) Solve for x: 12 plus 7 times 3 is 33

$$12 + 7 \times 3 = 33$$

Do NOT USE an x for multiplication

Graphing a Quadratic Equation: $y = x^2 - 4x + 4$

The graph shows a parabola opening upwards with its vertex at (2, 0). The x-axis is labeled from -2 to 10, and the y-axis is labeled from -2 to 8. The parabola passes through the points (0, 4), (2, 0), and (4, 4).

AI based Dashboards

Standards achievements

5.OA.A.2 Write simple expressions that record calculations with numbers, and interpret numerical expressions without evaluating them. For example, express the calculation "add 8 and 7, then multiply by 2" as $2 \times (8 + 7)$. Recognize that $3 \times (1892 + 921)$ is three times $1892 + 921$.

5.OA.B.3 Generate two numerical patterns using two given rules. Identify apparent relationships between corresponding terms. Form ordered pairs consisting of corresponding terms from the two patterns, and graph the ordered pairs on a coordinate plane.

5.NBT.A.2 Explain patterns in the number of zeros of the product when multiplying a number by powers of 10, and explain patterns in the placement of the decimal point when a decimal is multiplied or divided by a power of 10. Use whole-number exponents to denote powers of 10.



Write simple expressions that record calculations with numbers, and interpret numerical expressions without evaluating them. For example, express the calculation "add 8 and 7, then multiply by 2" as $2 \times (8 + 7)$. Recognize that $3 \times (1892 + 921)$ is three times $1892 + 921$.



Generate two numerical patterns using two given rules. Identify apparent relationships between corresponding terms. Form ordered pairs consisting of corresponding terms from the two patterns, and graph the ordered pairs on a coordinate plane. For example,



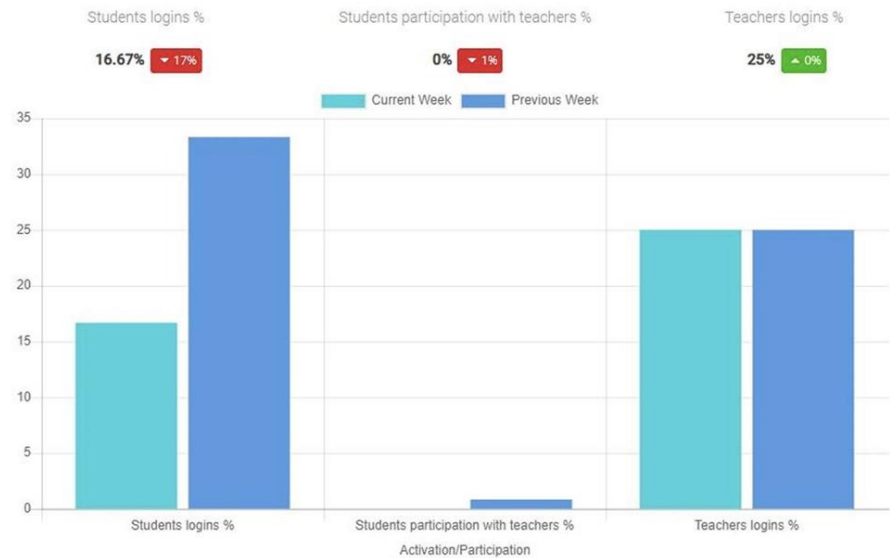
Explain patterns in the number of zeros of the product when multiplying a number by powers of 10, and explain patterns in the placement of the decimal point when a decimal is multiplied or divided by a power of 10. Use whole-number exponents to denote powers of 10.

Standards achievements of each student

Export to Excel

Student Name	Student Number	Level	Section	School	Correct Answers	Submission Mark	5.OA.A.2. Write simple expressi...	5.OA.B.3. Generate two numerica...	5.NBT.A.2. Explain i
Nick	9998942799	Grade 5	A	Lincoln Elementary School	19	34	90%	60%	80%
Sarah	9995612199	Grade 5	A	Lincoln Elementary School	9	15	60%	10%	50%

SCHOOL ACTIVATION PER WEEK



Microsoft Teams

Search or type a command

Posts Files Class Notebook Assignments Grades Insights +

Insights (Preview) Data collected since May 6, 2019

Export to Excel

All Students

All time 30 days 7 days Today 03/12/2020

Digital activity: 92%

Average grade: 75%

On time assignment: 67%

Time for feedback: 3.3 days

Communication activity: 310

All activities

3 out of 36 not active

01:30 PM

View file: The Complete Work of Shake...ppts

Comment on file: Shakespeare sonnets.docx

Create and edit file: Who was William Shakespeare.docx

Post: 3 messages

React to: 4 messages

Tanya Jones

Jacob Cooper

Juanita Flores

Esther Russell

Marvin Webb

Brandon Pena

Insights

All grades

54 Spotlights (17 New)

Maple Leaf Elementary > School climate

There is a downward trend in the school climate.

Fifth grade > Engagement

All students have high levels of engagement. Check out what works for them.

Fifth grade > Student support

25 students might need more support next week.

Third grade > Workload

25 students may be overwhelmed by the workload.

Aug 2 - 8, 2020

Drill up	Organization	ENGAGEMENT	Missed assignments	Missed meetings	WORKLOAD	SCHOOL CLIMATE
	Maple Leaf Elementary	695	15% +2%	13% +3%	18% -2%	19% -3%
	First Grade	108	19%	11%	24%	13%
	Second grade	120	17%	12%	11%	11%
	Third grade	102	14%	8%	17%	22%

How do you feel in school?

Top 5: Happy, Bored, Relaxed, Worried, Tired

Windows 10 Accessibility



Vision

Make Your device
Easier To See Or use
With/Without screen



Hearing

Make Your Device
Easier To Hear Or
Use Without Sound



Physical

Make Your Device
Easier To Use Of You
Have Limited Reach Or Strength



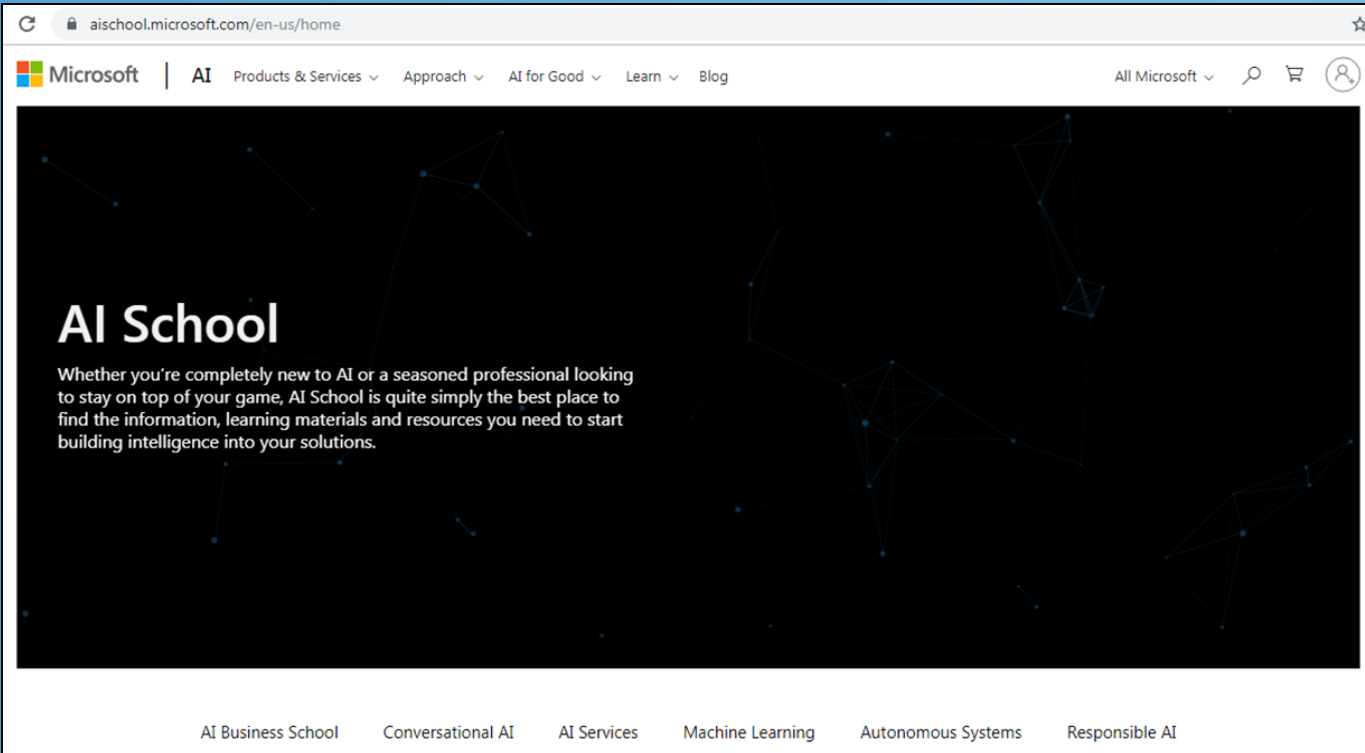
Cognition

Make Your Device
Easier To Focus And Get
Things Done With Windows

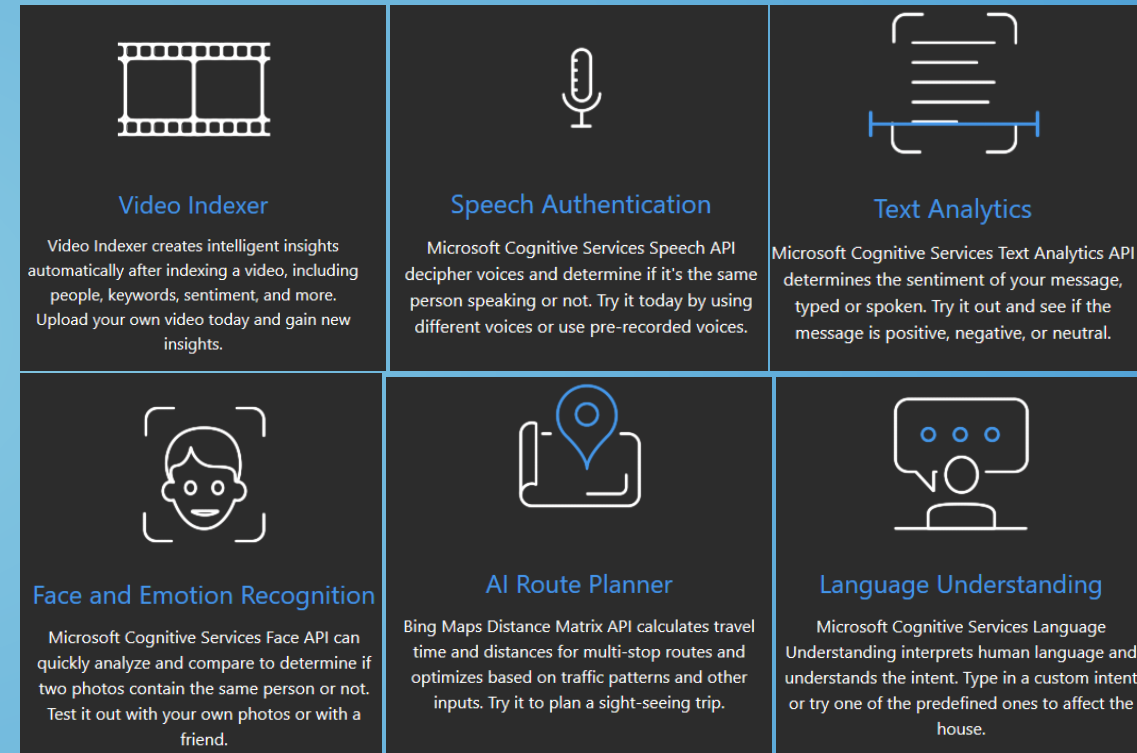
Opportunities to experience and learn about AI

Introduction to Microsoft AI School

Hands-On with AI



<https://aischool.microsoft.com/en-us/home>



<https://aidemos.microsoft.com/>

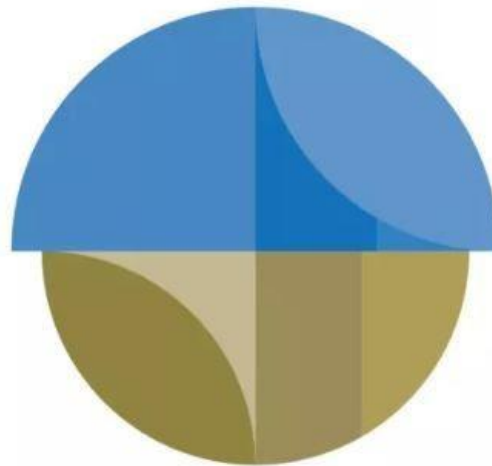
Future Careers - AI



Job landscape

By 2025, new jobs will emerge and others will be displaced by a shift in the division of labour between humans and machines, affecting:

97 million



85 million

Growing job demand:

1. Data Analysts and Scientists
2. AI and Machine Learning Specialists
3. Big Data Specialists
4. Digital Marketing and Strategy Specialists
5. Process Automation Specialists
6. Business Development Professionals
7. Digital Transformation Specialists
8. Information Security Analysts
9. Software and Applications Developers
10. Internet of Things Specialists

Decreasing job demand:

1. Data Entry Clerks
2. Administrative and Executive Secretaries
3. Accounting, Bookkeeping and Payroll Clerks
4. Accountants and Auditors
5. Assembly and Factory Workers
6. Business Services and Administration Managers
7. Client Information and Customer Service Workers
8. General and Operations Managers
9. Mechanics and Machinery Repairers
10. Material-Recording and Stock-Keeping Clerks

Source: Future of Jobs Report 2020, World Economic Forum.

How the jobs landscape will change in the next five years?



